

Multi Field of View  
Video Measurement  
System

---



quantum

---

NEW





# quantum

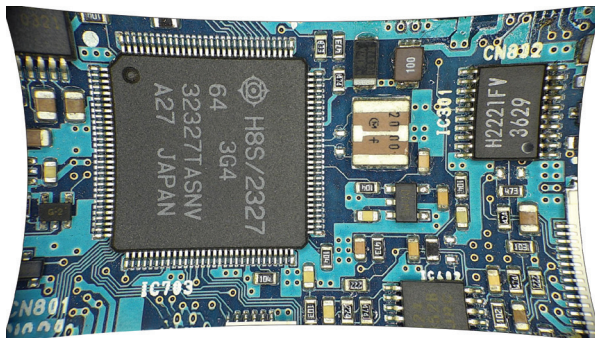
A new category of FOV measuring system from Ash Technologies. Quantum is a fully integrated – No PC required, easy to use, reliable and efficient 2D video measurement system. Advanced digital image processing technology and unprecedented Multiple FOV ranges reduces measurement time and eliminates operator variances.

## Unique Technology

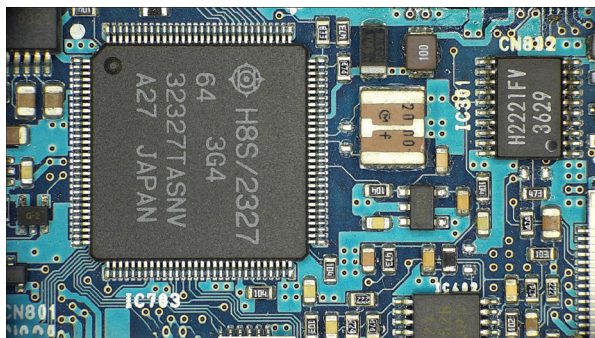
### RTLDC™ Real Time Lens Distortion Correction

(Patent Applied For)

Distortion is inherent in all lenses. Rather than correct this through optics, Ash have developed a digital solution. Quantum uses advanced algorithms to correct lens distortion on the live image. This results in consistent measurements across the entire field of view.



Before



After

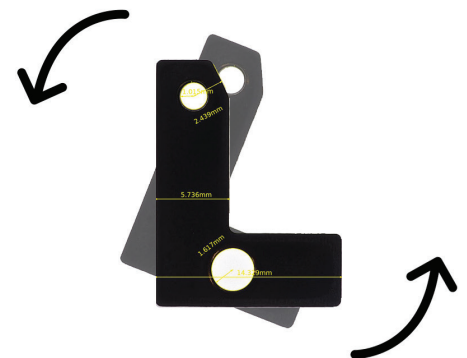
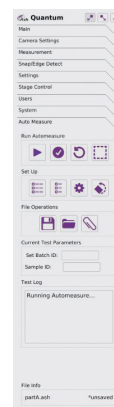
### AshCal™ Auto Calibrates with every zoom change

(Patent Applied For)

Each magnification level is factory calibrated which saves time re-calibrating after every zoom change.

### Automatic Alignment

- Automatic identification of part position & re-orientation: No need for a jig to position parts. The position of a part is automatically identified and re-oriented to its programmed measurement position.

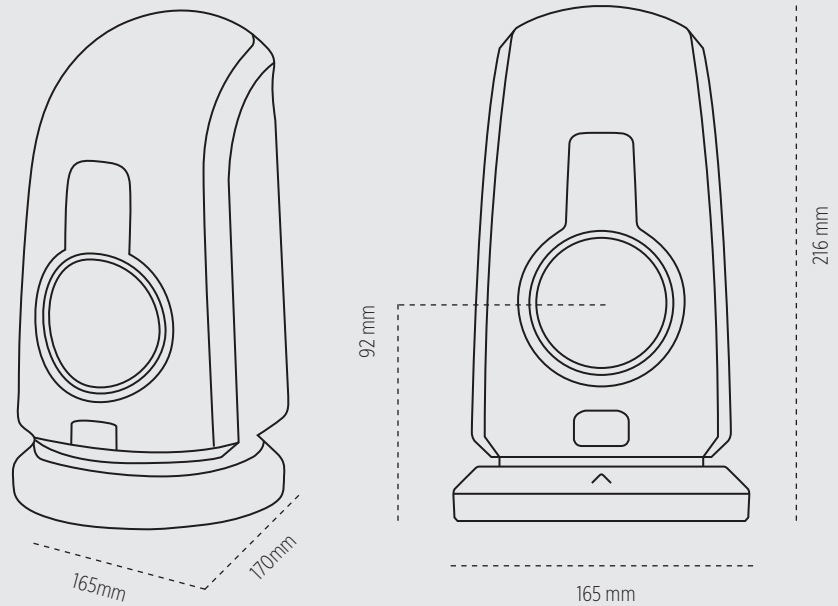


### Quick Measurements & Data Sharing

- Save and recall measurement and settings files for routine inspections
- Simultaneous automatic measurements to speed up inspection time
- PASS/FAIL tolerance judgement display for rapid identification of failures
- NFS connectivity for automatic transfer of results to the network

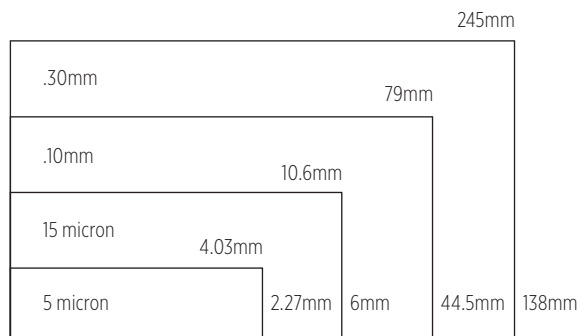
# QUANTUM

Multi Field of View Video  
Measurement System



## Multi Field of View System

RTLDC™ means no lens change is required to achieve multiple fields of view. Quantum uses digital correction on the live image.



## Technical Specifications

<b>Optics</b>	+5 lens with 4 fixed position zooms
<b>FOV</b>	245.5mm x 138.0 mm @ L1 mag; 79.0mm x 44.5mm @ L2 mag; 10.6mm x 6.0mm @ L3 mag; 4.03mm x 2.27mm @ L4 mag;
<b>Illumination</b>	Quadrant controllable LED ring light; Sub-stage transmitted LED illumination
<b>Power</b>	24 W
<b>Dimensions</b>	216(H) x 165(W) x 170(D) mm
<b>Weight</b>	1.75 kg
<b>Temperature</b>	Storage: -10°C to +60°C Operating: +5°C to +40°C

### Contact Us.

Ash Technologies Ltd.  
B5, M7 Business Park,  
Naas, Co. Kildare,  
W91 P684, Ireland.

P: + 353-45-882212  
E: [info@ash-vision.com](mailto:info@ash-vision.com)  
W: [www.ash-vision.com](http://www.ash-vision.com)

