

# StyliCleaner®

The solution to  
clean your sensor  
automatically

**NEW  
PRODUCT!**

—Patented—

produced by:

**Mako**  
www.mako.nl

[www.stylicleaner.com](http://www.stylicleaner.com)

**In just 30  
seconds, your  
sensor will be  
cleaned.**

**MAKO  
MACHINES & KONSTRUCTIES**

Eggerinksweg 7  
7556 AG Hengelo (Ov)  
Nederland  
Phone: +31(0)74 24 55 340  
[www.mako.nl](http://www.mako.nl)  
[info@mako.nl](mailto:info@mako.nl)



[www.stylicleaner.com](http://www.stylicleaner.com)

*Are you a 3D coordinate measuring machine operator?*

*Are the styli often polluted?*

*Does this causes deviating test results?*

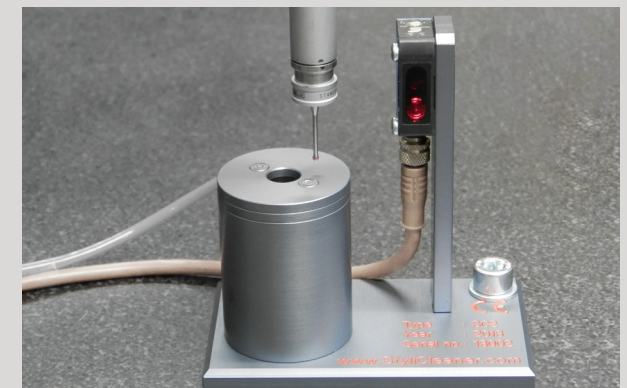
**Then the StyliCleaner is the solution.**

The StyliCleaner can automatically clean your sensor, also during the measurement process. Its the combination of compressed air and detergent that will remove all the dirt from the sensor. This in just 30 seconds.

Because of the Stylicleaner you don't have to clean the sensors manually. A procedure that is very time consuming and it requires recalibration of all the sensor angles.

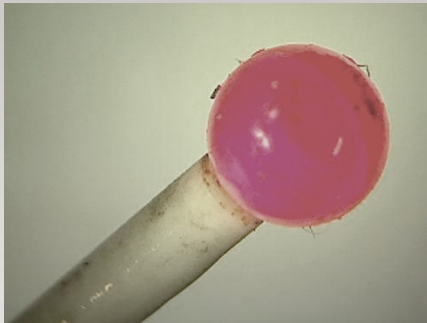
The result:

- Increased reliability of your measurement results.
- Saving .... Hours / minutes a day / time



## CLEANING PROCEDURE

The stylus is polluted



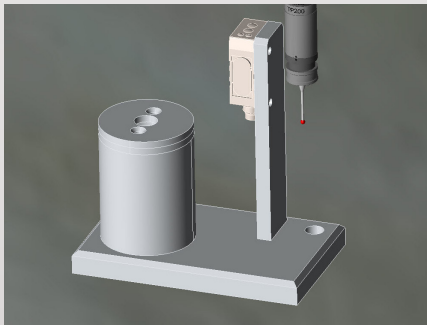
The stylus is polluted.  
The stylus should be cleaned.

- 1 The stylus moves along the activation sensor. Triggering the cleaning cycle to start.
- 2 Once the stylus is standing above the cleaning unit, the stylus actually can be cleaned.
- 3 The stylus moves up and down through the cleaning unit, for about 20 seconds.  
↑↓
- 4 By the use of compressed air the stylus will be cleaned.
- 5 Once the stylus is again standing above the cleaning unit, the cleaning cycle is completed.

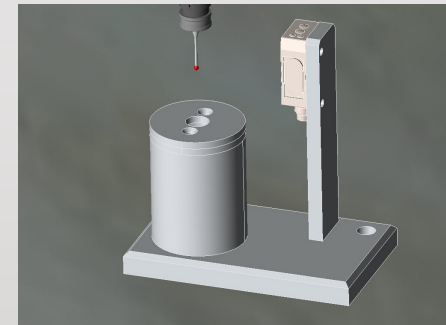
The stylus is clean again



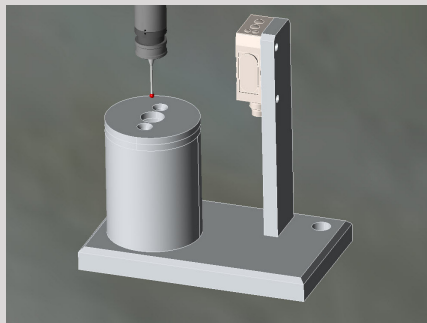
1



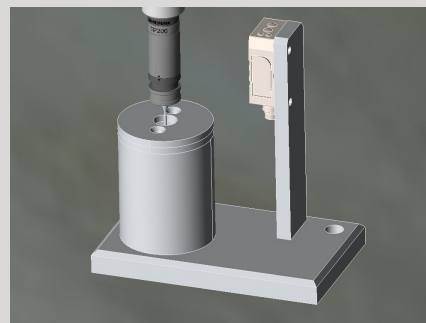
5



2



3



4

